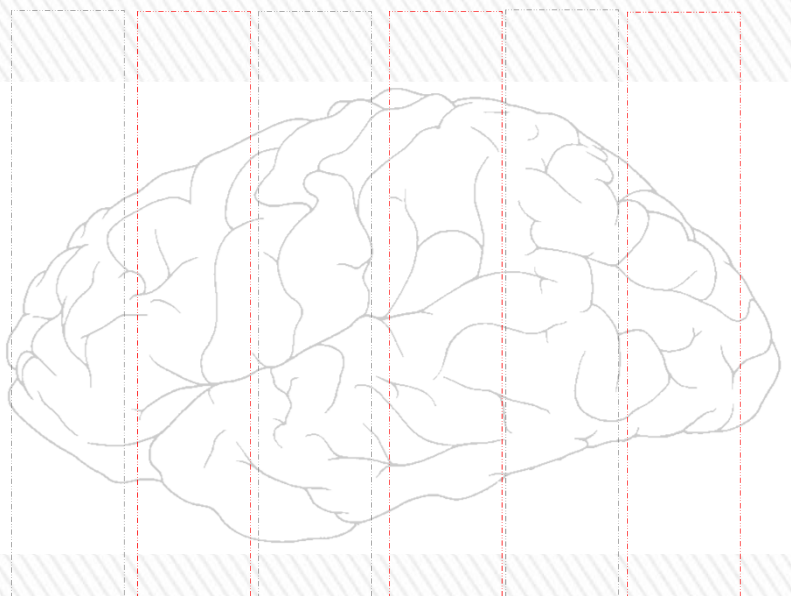


# Multiple Sclerosis & Parkinson's Tissue Bank

- FROM BRAIN TO BREAKTHROUGH

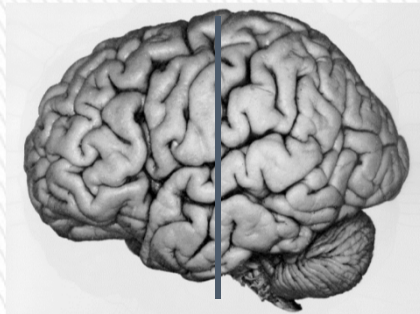
## Guide for image and block identification (MSP-G-004)



September 2014



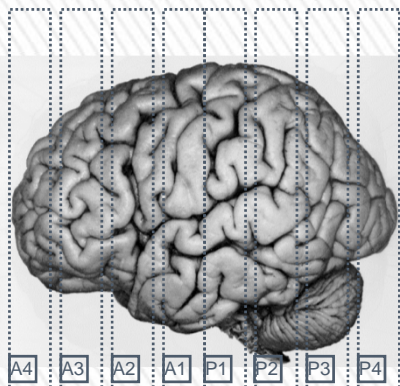
# Protocol for processing of coronal slices of cerebrum



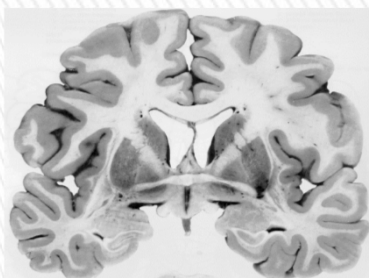
Single coronal cut through mammillary bodies to separate brain into anterior and posterior halves



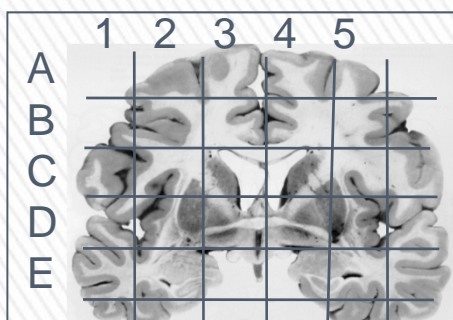
Cut 1 cm thick coronal slices through entire brain using the 1 cm guide



Number the slices towards the frontal pole and towards the occipital pole. First slice anterior to the mammillary bodies is **A1**, the next is **A2** etc. The first slice posterior to the mammillary bodies is **P1**, the next is **P2** etc.



Photograph each slice from both aspects; the face towards the frontal pole has the suffix "**a**", the face towards to occipital pole has the suffix "**p**". So, image **A3a** is of the anterior face of the third slice towards the frontal pole.



Cut each slice into 2x2cm blocks using acetate grid as a guide and snap freeze in isopentane precooled on dry ice

Store at -85°C





# Explanation of slice image identification

The diagram above explains how we routinely obtain coronal slices from cerebral hemispheres, how they are photographed and labelled and snap frozen using the brass plate technique.

This unique identification label is constructed in the following manner:

## MS333 A1C1 – MS333 P1C1

**MS333** – MS333 is the case number

**A1** – A is the anterior portion of the brain (mammillary bodies mark the mid-line)

**P1** – P is the posterior portion of the brain (mammillary bodies mark the mid-line)

**A1** – 1 is the number of the anterior slice 1 (nearest the mammillary bodies)

**P1** – 1 is the number of the posterior slice 1 (nearest the mammillary bodies)

Anterior of mammillary bodies

Posterior of mammillary bodies

**FP** – A5 – A4 – A3 – A2 – A1 – **MB** – P1 – P2 – P3 – P4 – P5 – **OP**

**FP** – frontal pole; **MB** – mammillary body; **OP** – occipital pole

**C1** – is the position of the blocks on the grid

**zb** – denotes snap frozen slices/blocks

**fb** – denotes fixed frozen slices/blocks

### Abbreviations:

CL – cerebellum

SC – spinal cord

BS – brain stem

inf – inferior aspect of the cerebrum

sup – superior aspect of the cerebrum

rlat – right lateral aspect of the cerebrum

llat – left lateral aspect of the cerebrum

r – right

l – left

